



# STONEBROOK ESTATES SUBDIVISION

## FORT THOMAS, KENTUCKY

18 North Fort Thomas Ave., Suite 4A  
 Fort Thomas, Kentucky 41075  
 (859) 441-3070 fax (859) 441-2507

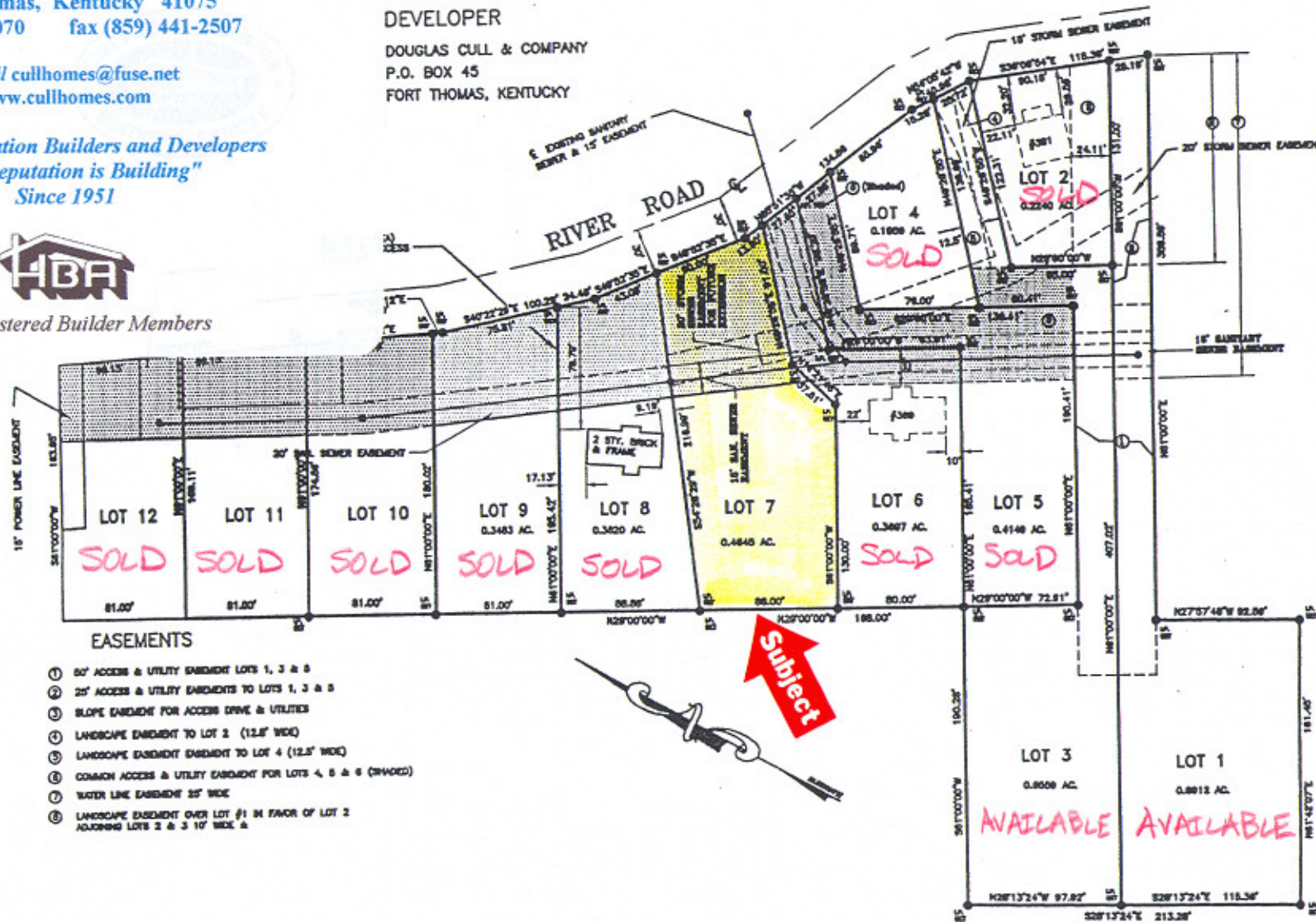
E-mail [cullhomes@fuse.net](mailto:cullhomes@fuse.net)  
[www.cullhomes.com](http://www.cullhomes.com)

DEVELOPER  
 DOUGLAS CULL & COMPANY  
 P.O. BOX 45  
 FORT THOMAS, KENTUCKY

Second Generation Builders and Developers  
 "Our Reputation is Building"  
 Since 1951



Registered Builder Members

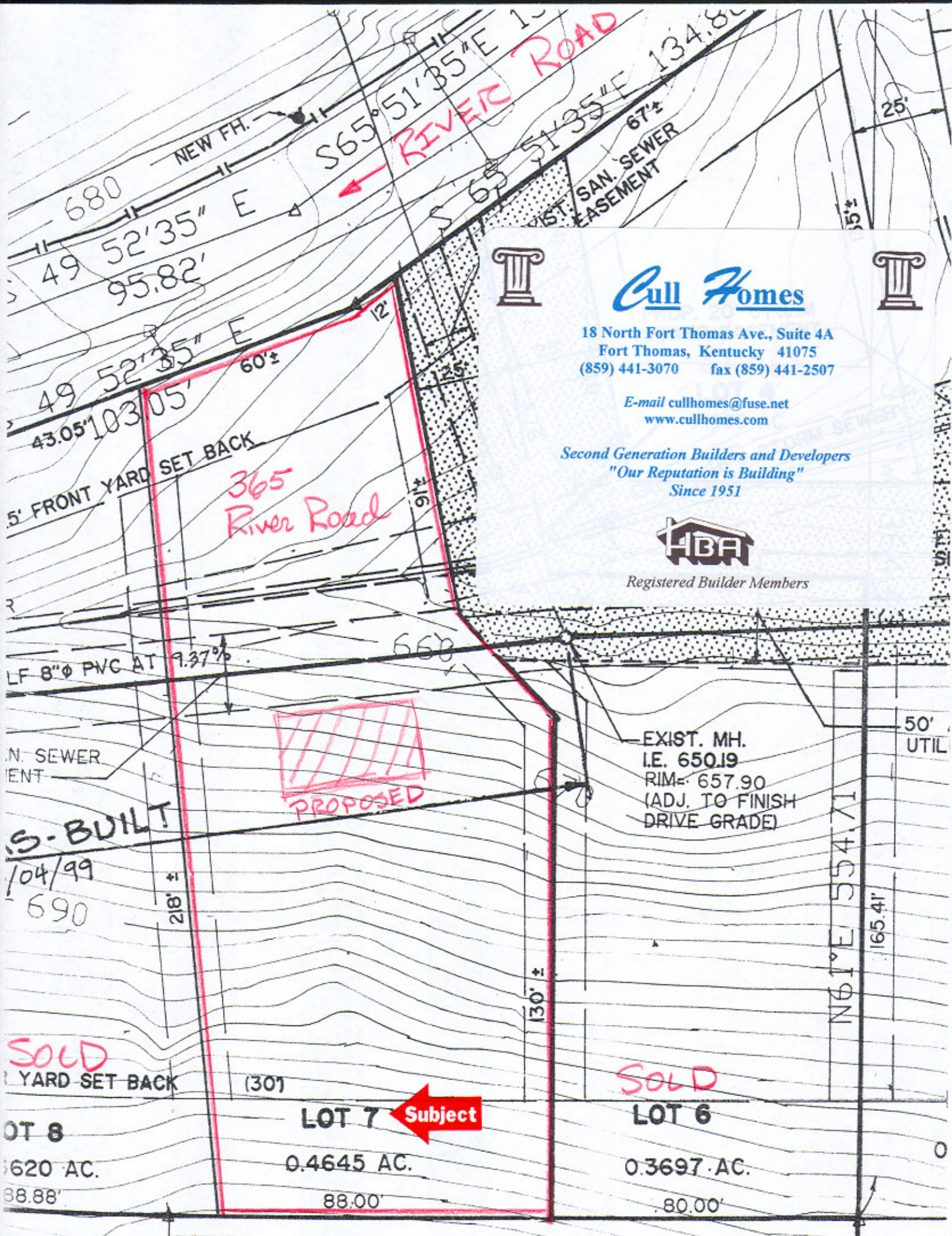


- EASEMENTS**
- ① 50' ACCESS & UTILITY EASEMENT LOTS 1, 3 & 5
  - ② 25' ACCESS & UTILITY EASEMENTS TO LOTS 1, 3 & 5
  - ③ SLOPE EASEMENT FOR ACCESS DRIVE & UTILITIES
  - ④ LANDSCAPE EASEMENT TO LOT 2 (12.5' WIDE)
  - ⑤ LANDSCAPE EASEMENT EASEMENT TO LOT 4 (12.5' WIDE)
  - ⑥ COMMON ACCESS & UTILITY EASEMENT FOR LOTS 4, 5 & 6 (SHADDED)
  - ⑦ WATER LINE EASEMENT 25' WIDE
  - ⑧ LANDSCAPE EASEMENT OVER LOT #1 IN FAVOR OF LOT 2 ADJOINING LOTS 2 & 3 10' WIDE &









**Cull Homes**



18 North Fort Thomas Ave., Suite 4A  
 Fort Thomas, Kentucky 41075  
 (859) 441-3070 fax (859) 441-2507

E-mail [cullhomes@fuse.net](mailto:cullhomes@fuse.net)  
[www.cullhomes.com](http://www.cullhomes.com)

Second Generation Builders and Developers  
 "Our Reputation is Building"  
 Since 1951



Registered Builder Members

365  
 River Road



EXIST. MH.  
 I.E. 650.19  
 RIM= 657.90  
 (ADJ. TO FINISH  
 DRIVE GRADE)

SOLD

SOLD

LOT 8  
 0.620 AC.  
 88.88'

LOT 7 **Subject**  
 0.4645 AC.  
 88.00'

LOT 6  
 0.3697 AC.  
 80.00'

NEW FH.  
 680  
 49 52'35" E  
 95.82'

S65°51'35"E 134.82'  
 RIVER ROAD  
 67'±  
 65°51'35"E

43.05' 103.05'  
 49 52'35" E  
 60'±

5' FRONT YARD SET BACK

LF 8"Ø PVC AT 7.37%

N. SEWER  
 EMENT

S-BUILT  
 /04/99  
 690

YARD SET BACK

50' UTIL  
 165.41'  
 N61°E 554.71'